

# أستكمال العمارة فى فجر المسيحية

## Early Christian Architecture & Byzantine Architecture

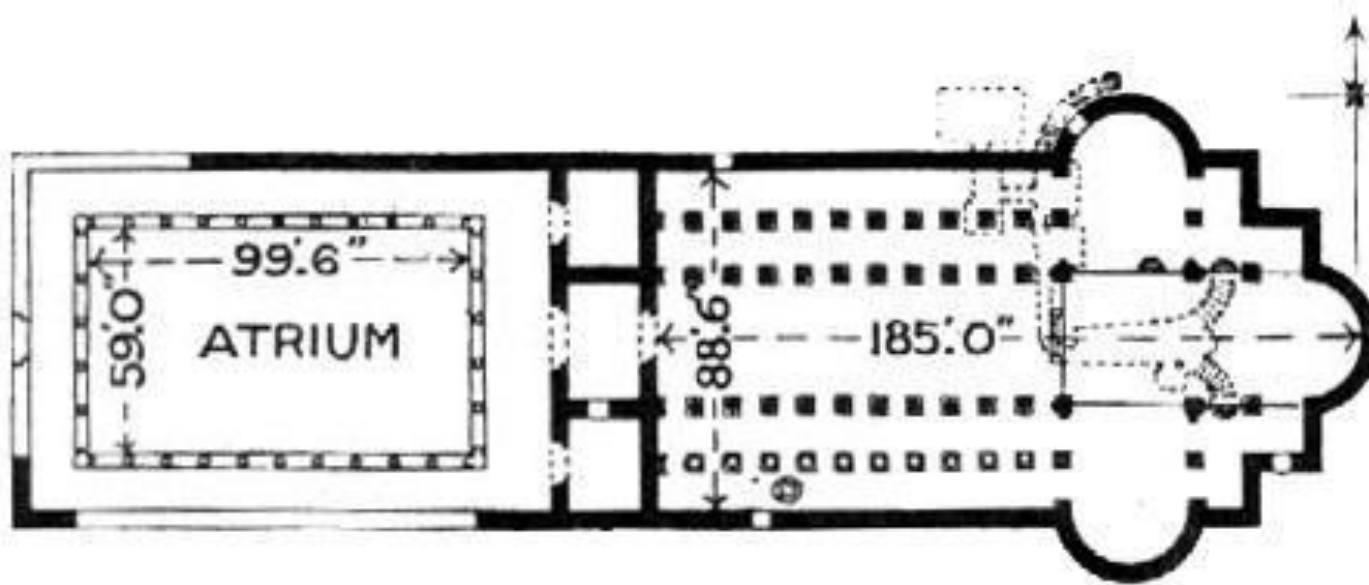
Dr. Kamal Elgabalawy

**THE REFERENCES TO MULTIPLE SOURCES ARE TEXT & FIGURES**

**(SKETCHES, DRAWINGS, PICTURES, PHOTOS,...ETC.)**

**ALL THE RIGHTS BELONG TO ORIGINAL AUTHORS**

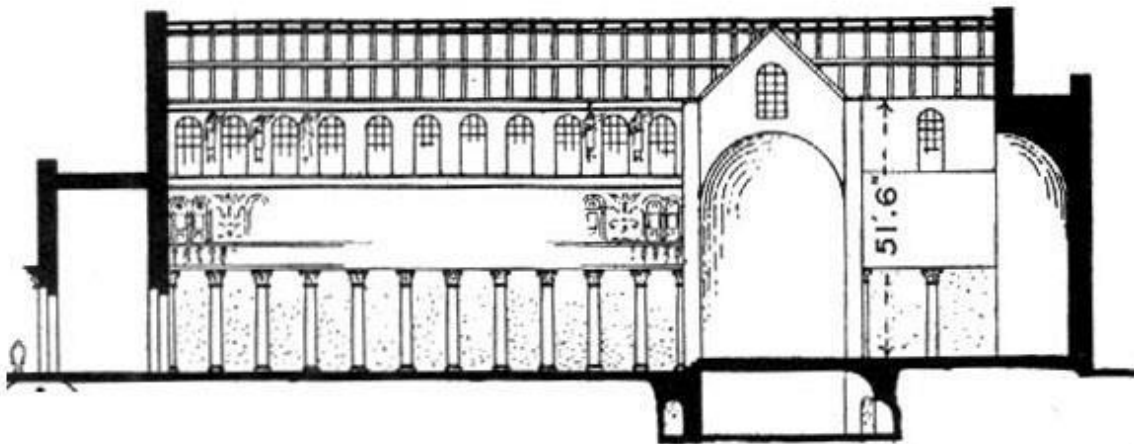
## Church of the Nativity - Bethlehem . كنيسة المهد بيت لحم، بفلسطين ٣٣٠ م



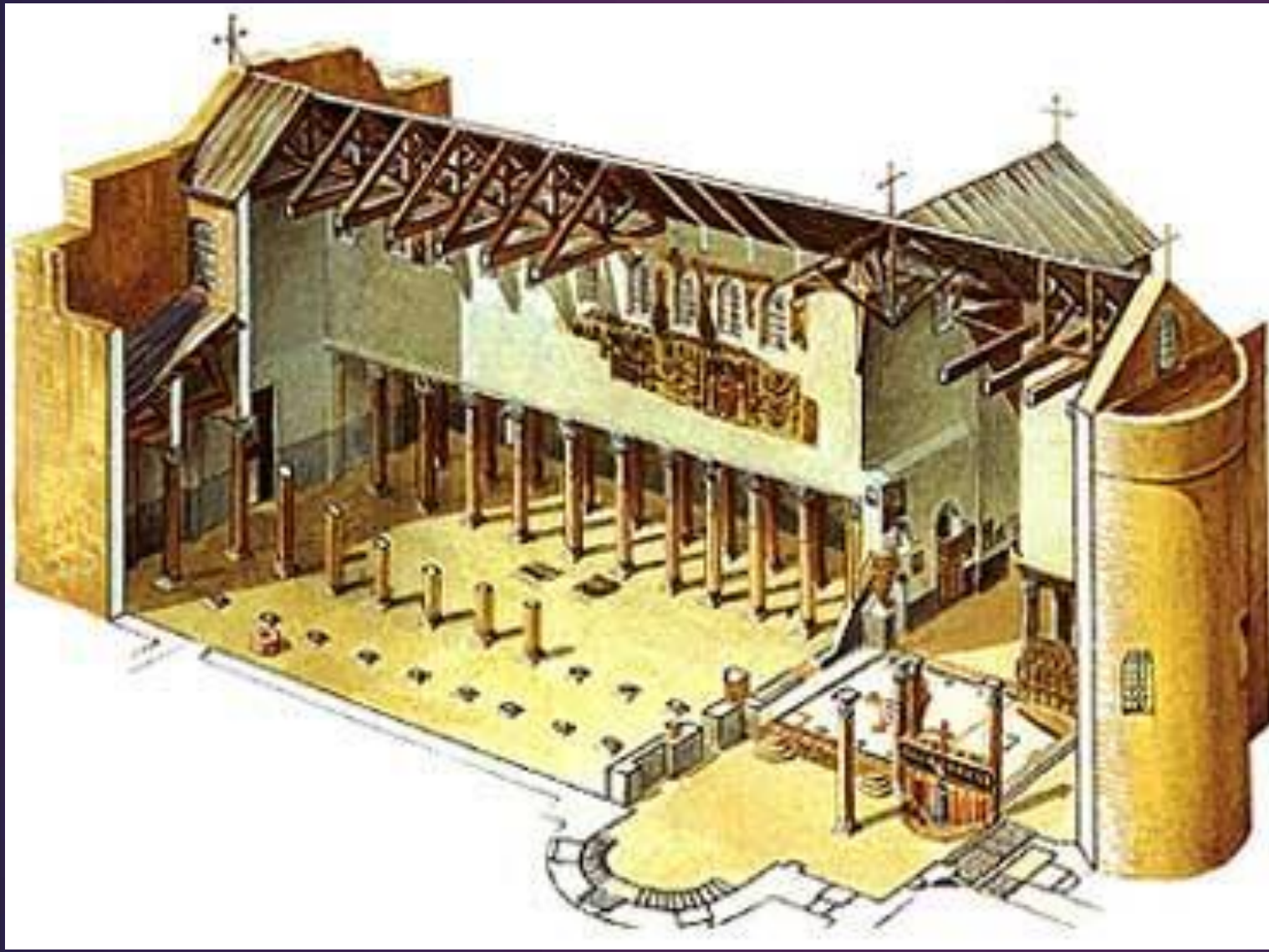
The Church of the Nativity in Bethlehem is one of the oldest churches in Palestine and the world. Built by Emperor Constantine in 335 AD,

The church contains three entry doors, and contains a portico for protection, and Byzantine decoration in the Crusader arches.

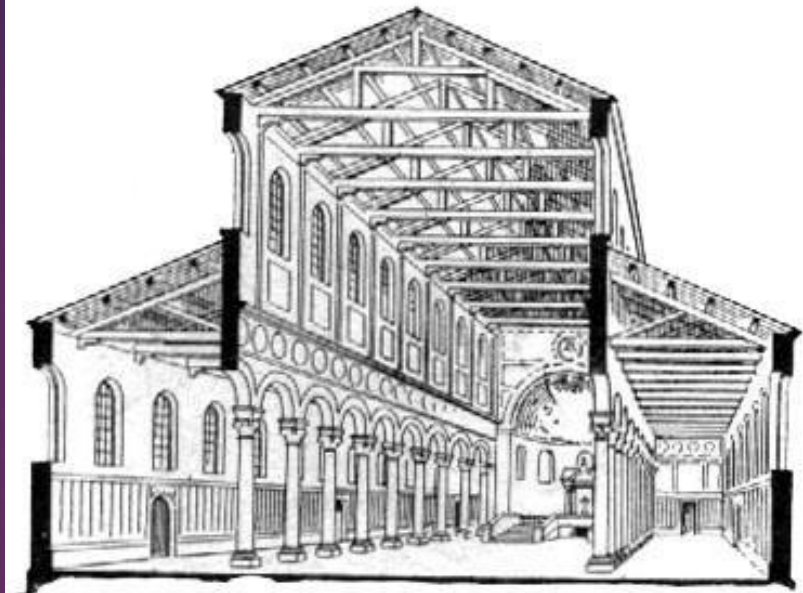
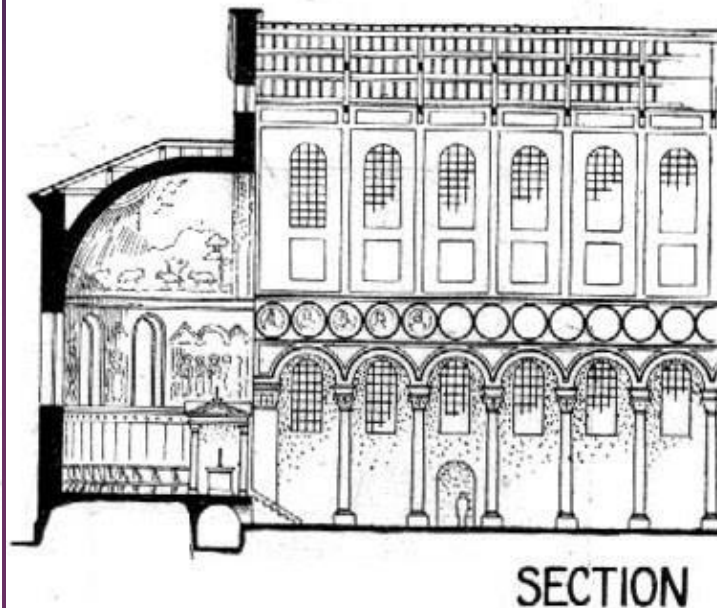
This church has a system ( Double Aisle System )



كنيسة المهد بيت لحم، بفلسطين ٣٣٠ م . Church of the Nativity - Bethlehem .



### 3-Sant'Apollinare in Classe . كنيسة سانت ابوليناري، كلاس، رافينا، ايطاليا ( ٥٣٤م - ٥٣٩م )



The church was designed with the idea of basilica, where the coverage is in the form of a wooden gable with a height difference to make the upper window openings for ventilation and lighting.

The presence of one main entrance distinctive in terms of area and height, as well as the presence of multiple other entrances secondary

### كنيسة سانت ابوليناري، كلاس، رافينا، ايطاليا ( ٥٣٤م - ٥٣٩م ) . 3-Sant'Apollinare in Classe

